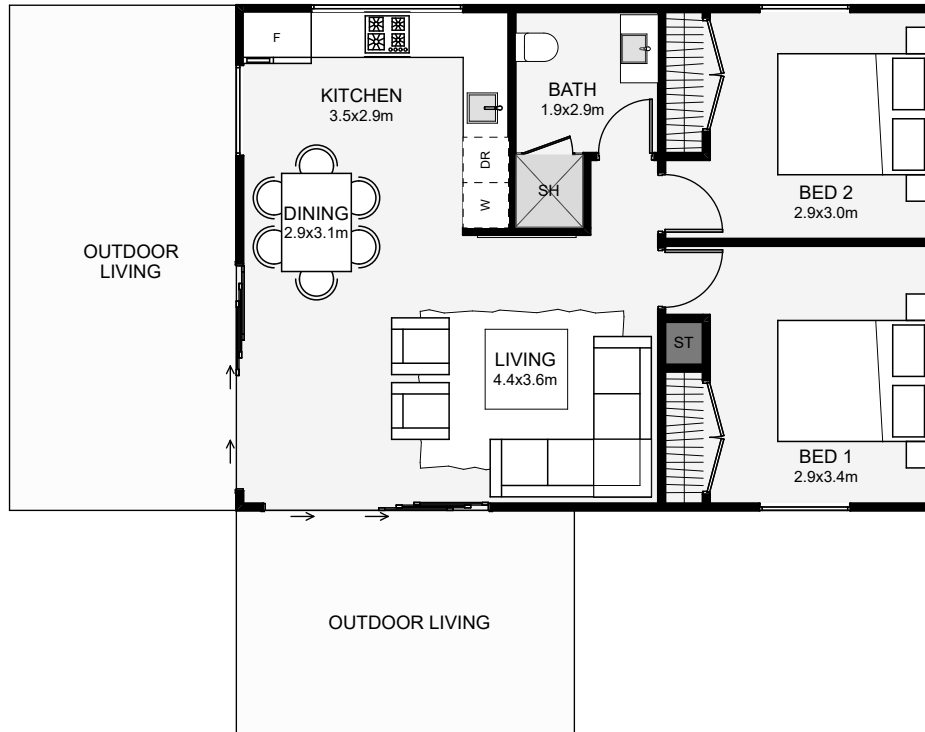




Small and modern, this two-bedroom dwelling is a perfect mix of style and usable space. Inside, the open plan living, dining and kitchen help maximise usable space within such a small footprint. This small home is sure to maximise the land it sits on whether that's in the backyard or at the beach!



Floor Area: 62m²

0
 2
 1
 1
 9.3m
 6.7m

Contact us:
 m: 027 408 7217
 e: glenn@gwb.co.nz
 www.gwb.co.nz

